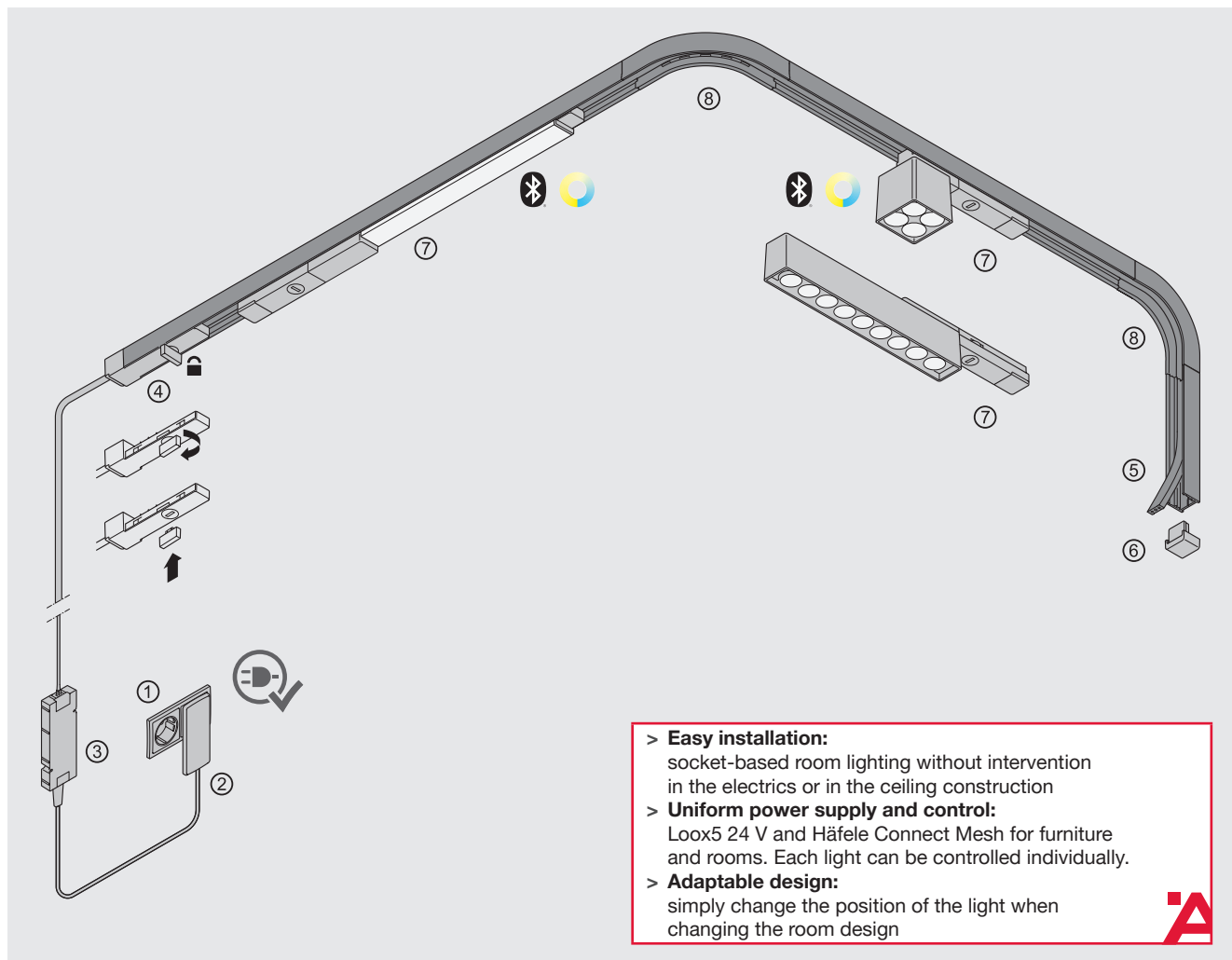


One Cable: the 24 V socket-based lighting system for wall and ceiling

Multi-white lights with Häfele Connect Mesh Bluetooth® control

2

24 V



- > **Easy installation:**
socket-based room lighting without intervention in the electrics or in the ceiling construction
- > **Uniform power supply and control:**
Loox5 24 V and Häfele Connect Mesh for furniture and rooms. Each light can be controlled individually.
- > **Adaptable design:**
simply change the position of the light when changing the room design



Basic components

For commissioning the system

- ① Simply hook up the power from the socket and you're good to go
- ② The mains lead with its extremely flat plug fits behind any piece of furniture
- ③ The power supply unit is hidden discreetly behind furniture or in a designer housing
- ④ The feeder supplies the power to the flat cable
- ⑤ The profile and flat cable form the centrepiece of the system
- ⑥ The end cap adds a stylish finish to the profile

Luminaires and optional components

For customised configuration

- ⑦ Multi-white lights with Bluetooth® control Häfele Connect Mesh
 - > A focussed approach to lighting with spotlights
 - > LED strip light adapter for all multi-white, 8-mm-wide Loox5 LED strip lights
- ⑧ The 90° profile connector changes the direction on a single room surface (on a ceiling or wall) or forms the transition for the lighting system across two room surfaces (wall/ceiling or wall/wall)



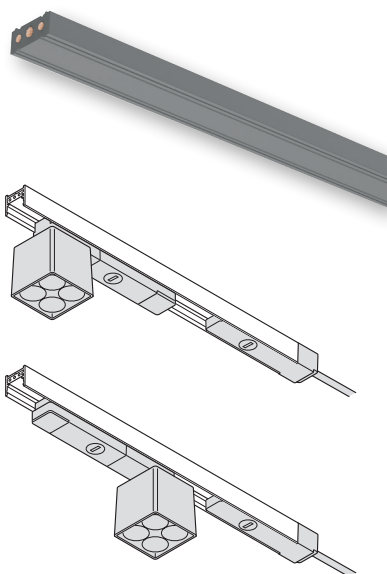
2



24 V

DGH-M 2021, HDE-en, 11/20; Dimensional data not binding. We reserve the right to alter specifications without notice.

Technical data of the flat cable



The lighting connections can be positioned towards the feeder (top) and away from the feeder (bottom)

Reverse polarity protection

The connections for the lights and the LED strip light adapter are reverse polarity protected thanks to the symmetrical design of the flat cable (2 outer cables around the centre cable). This makes it possible to position lights towards or away from the feeder.

Power capacity

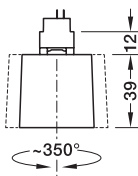
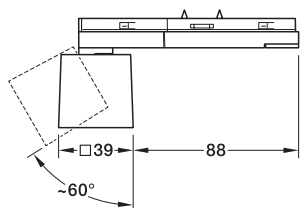
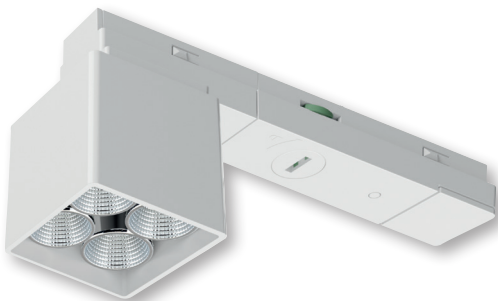
- > With feeder up to 90 W:
from 20 W to 90 W depending on the power supply unit.
- > With 2 x 120 W feeders:
The total power of the system is 240 W. Each outer cable of the flat cable may be subjected to a maximum load of 120 W. The distribution to the lines in the flat ribbon cable is achieved by positioning lights with a rated output of max. 120 W in one direction (towards the feeder) and max. 120 W in the other direction (away from the feeder).

System length

Maximum lead length of 20 metres from the power supply unit output to the final light or to the end of an LED strip light.

Spotlight Häfele Lighting Spot 4 TT Connect

Flat cable lighting system 24 V, 5 W, IP20



- > Free Connect Mesh app for Apple iOS® and Android™
- > Completely wireless control via Connect Mesh



- > Dimmable: Yes
- > Housing material: Plastic
- > Design: Aluminium heat sink
- > Length: 39 mm
- > Width: 39 mm
- > Height: 39 mm
- > Number of LEDs: 4
- > Life time: L80/B10 >50000 h
- > Colour rendering index Ra: 90
- > Installation: Separable clamp fixing
- > Installation reference: Press the contact blade in straight and without tilting. Risk of injury: sharp contact blades. Do not touch the reflectors! For vertical wall mounting, an alignment connector must be attached directly to the light towards the floor as a mechanical safety device.

Note

Energy efficiency

This product contains a light source of energy efficiency class F.

Supplied with

1 Luminaire with current collector



| Nominal voltage V | Colour temperature K | Light colour | Luminous flux lm | Wattage W | Luminous efficacy lm/W | Refraction angle ° | White | Black |
|-------------------|----------------------|--------------------------|------------------|-----------|------------------------|--------------------|------------|------------|
| 24 | 2700–5000 | Warm white to cool white | 450–500 | 5 | 90–100 | 40 | 833.68.326 | 833.68.325 |
| | | | | | | 80 | 833.68.324 | 833.68.323 |

Packing: 1 Piece

Connect Mesh control components

► MB 2.284

2

24 V

DGH-M 2021, HDE-en, 11/20; Dimensional data not binding. We reserve the right to alter specifications without notice.

13.01.2025
WS 756

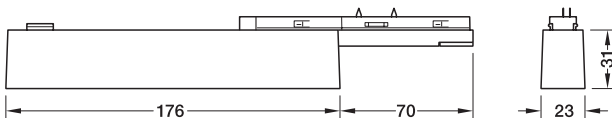
Spotlight Häfele Lighting Spot 9 Connect linear

Flat cable lighting system 24 V, 16 W, IP20



2

24 V



- > Free Connect Mesh app for Apple iOS® and Android™
- > Completely wireless control via Connect Mesh



- > Dimmable: Yes
- > Housing material: Plastic
- > Design: Aluminium heat sink
- > Length: 176 mm
- > Width: 23 mm
- > Height: 31 mm
- > Number of LEDs: 9
- > Life time: L80/B10 >50000 h
- > Colour rendering index Ra: 90
- > Installation: Separable clamp fixing
- > Installation reference: Press the contact blade in straight and without tilting. Risk of injury: sharp contact blades. Do not touch the reflectors! For vertical wall mounting, an alignment connector must be attached directly to the light towards the floor as a mechanical safety device.

Note

Energy efficiency

This product contains a light source of energy efficiency class G.

Supplied with

1 Luminaire with current collector



| Nominal voltage V | Colour temperature K | Light colour | Luminous flux lm | Wattage W | Luminous efficacy lm/W | Refraction angle ° | White | Black |
|-------------------|----------------------|--------------------------|------------------|-----------|------------------------|--------------------|------------|------------|
| 24 | 2700–5000 | Warm white to cool white | 1100–1220 | 16 | 68–76 | 40 | 833.68.330 | 833.68.329 |
| | | | | | | 80 | 833.68.328 | 833.68.327 |

Packing: 1 Piece

Connect Mesh control components

► MB 2.284

DGH-M 2021, HDE-en, 11/20; Dimensional data not binding. We reserve the right to alter specifications without notice.

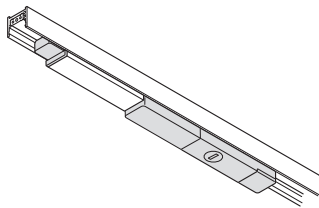
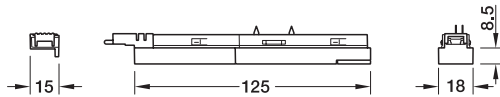
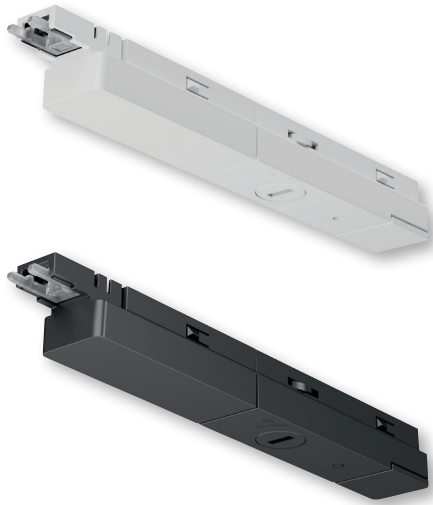
Adapter for LED strip light Häfele Lighting Connect

Flat cable lighting system 24 V, IP20



2

24 V



- > Free Connect Mesh app for Apple iOS® and Android™
- > Completely wireless control via Connect Mesh



- > Area of application: For Loox5 LED strip light (multi-white, 3-pin, 24 V)
- > Dimmable: Yes
- > Installation: Separable clamp fixing
- > Installation reference: Press the contact blade in straight and without tilting. Risk of injury: sharp contact blades. Do not touch the reflectors! For vertical wall mounting, an alignment connector must be attached directly to the light towards the floor as a mechanical safety device.

Supplied with
1 Adapter with current collector



| Nominal voltage V | Power rating W | White | Black |
|----------------------|-------------------|------------|------------|
| 24 | 75 | 833.68.334 | 833.68.333 |

Packing: 1 Piece

Order reference

Please order LED strip light from the Loox5 product range (24 V, multi-white, 3-pin, 8 mm) separately.

- ! Häfele Lighting Connect, MW, 24 V ▶ MB 2.68
- ! Connect Mesh control components ▶ MB 2.284

Diffuser Häfele Lighting OneCable for adapter for LED strip light



- > Material: Polycarbonate
- > Suitable for: Adapter for LED strip light

| Diffuser colour/finish | Light permeability % | 2500 mm | 3000 mm |
|------------------------|-------------------------|------------|------------|
| Transparent | ≈ 90 | 833.68.335 | 833.68.336 |

Packing: 1 Piece

DGH-M 2021, HDE-en, 11/20; Dimensional data not binding. We reserve the right to alter specifications without notice.

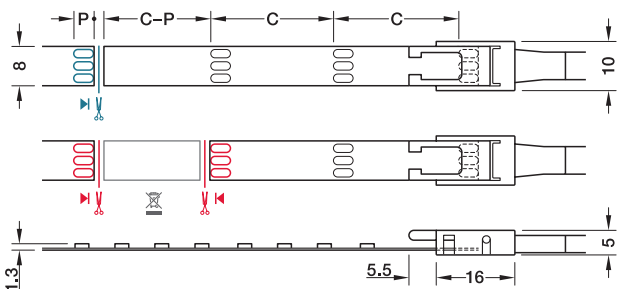
Häfele Loox5 LED 3044

LED strip light 24 V, 8 mm, multi-white, 2 x 120 LEDs/m, 4.8 W/m, IP20



2

12/24 V



(blue)
Cutting LED strip light to size
(one contact side remains with the offcut; can be re-used)

(red)
Connecting LED strip lights
(two contact sides required)

C = cut length
P = contact surface length

| 2700 K | 5000 K | 120° | |
|---------|---------|------|---------|
| 1025 lx | 1075 lx | | 250 mm |
| 425 lx | 445 lx | | 500 mm |
| 230 lx | 245 lx | | 750 mm |
| 145 lx | 150 lx | | 1000 mm |

Illuminance value lx applies to 1 m strip length

Optimised light mixture

- > Cool white and warm white LEDs in the smallest of spaces
- > Optimal light mixture without flickering



- > Dimmable: Yes
- > Area of application: Plinths, behind furniture and objects, ceiling light direct/indirect
- > Material: Plastic
- > Colour: White
- > Strip width: 8 mm
- > Section length: 50 mm
- > Number of LEDs/m: 2 x 120
- > Life time: L80/B10 >50000 h
- > Colour rendering index Ra: >90
- > Colour rendering index R9: >80
- > Energy efficiency class: F
- > Degree of protection: IP20
- > Installation: Self-adhesive

Note

Maximum strip length (visual) describes a strip section with a visually imperceptible drop in luminous flux of max. 30%. Please note: A strip section with a new power supply that follows immediately is noticeably brighter. Max. wattage-dependent strip length on the driver, see technical data for LED strip lights.

Supplied with

1 roll



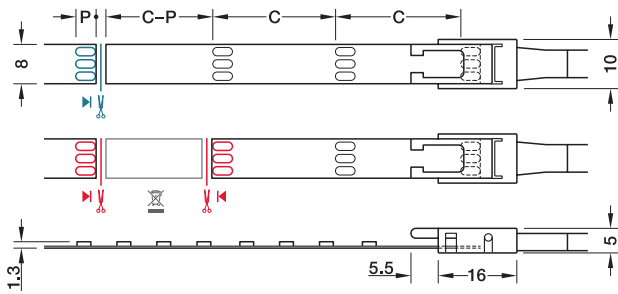
| Colour temperature K | Light colour | Wattage/m W | Luminous flux/m lm | Luminous efficacy lm/W | Max. strip length (visual) m | Packing Piece | 5 m | 50 m |
|----------------------|--------------|-------------|--------------------|------------------------|------------------------------|---------------|------------|------------|
| 2700–5000 | Warm white | 4.8 | 425–465 | 89–97 | 8.5 | 1 or 30 | 833.76.332 | – |
| | Cool white | 4.8 | 425–465 | 89–97 | 8.5 | 1 or 10 | – | 833.76.333 |

Order reference

Please order lead separately. Colour control via Häfele Connect Mesh 6-way distributor with multi-white adapter and remote control or smartphone. Please order separately. Installation of the free Häfele Connect Mesh app is required.

Häfele Loox5 LED 3047

LED strip light 24 V, 8 mm, multi-white, 2 x 120 LEDs/m, 9.6 W/m, IP20



(blue)
Cutting LED strip light to size
(one contact side remains with the offcut; can be re-used)

(red)
Connecting LED strip lights
(two contact sides required)

C = cut length
P = contact surface length

| 2700 K | 5000 K | 120° | |
|---------|---------|------|---------|
| 1865 lx | 2045 lx | | 250 mm |
| 785 lx | 865 lx | | 500 mm |
| 430 lx | 475 lx | | 750 mm |
| 270 lx | 295 lx | | 1000 mm |

Illuminance value lx applies to 1 m strip length

Optimised light mixture

- > Cool white and warm white LEDs in the smallest of spaces
- > Optimal light mixture without flickering



- > Dimmable: Yes
- > Area of application: Working areas, reading areas, storage spaces, store fixtures
- > Material: Plastic
- > Colour: White
- > Strip width: 8 mm
- > Section length: 50 mm
- > Number of LEDs/m: 2 x 120
- > Life time: L80/B10 >50000 h
- > Colour rendering index Ra: >90
- > Colour rendering index R9: >80
- > Energy efficiency class: F
- > Degree of protection: IP20
- > Installation: Self-adhesive

Note

Maximum strip length (visual) describes a strip section with a visually imperceptible drop in luminous flux of max. 30%. Please note: A strip section with a new power supply that follows immediately is noticeably brighter. Max. wattage-dependent strip length on the driver, see technical data for LED strip lights.

Supplied with

1 roll



| Colour temperature K | Light colour | Wattage/m W | Luminous flux/m lm | Luminous efficacy lm/W | Max. strip length (visual) m | Packing Piece | 5 m | 50 m |
|----------------------|--------------|-------------|--------------------|------------------------|------------------------------|---------------|------------|------------|
| 2700–5000 | Warm white | 9.6 | 825–930 | 86–97 | 6.5 | 1 or 30 | 833.76.350 | – |
| | Cool white | 9.6 | 825–930 | 86–97 | 6.5 | 1 or 10 | – | 833.76.351 |

Order reference

Please order lead separately. Aluminium profile is recommended from 9.6 W/ m. Colour control via Häfele Connect Mesh 6-way distributor with multi-white adapter and remote control or smartphone. Please order separately. Installation of the free Häfele Connect Mesh app is required.

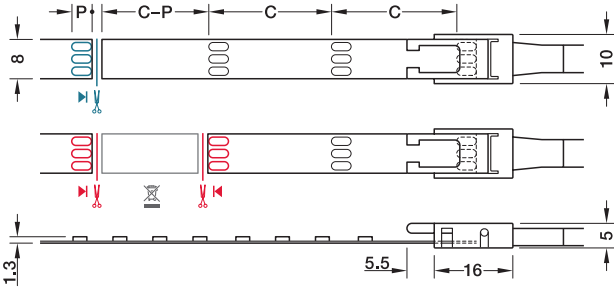
Häfele Loox5 LED 3049

LED strip light 24 V, 8 mm, multi-white, 2 x 120 LEDs/m, 14.4 W/m, IP20



2

12/24 V



(blue)
Cutting LED strip light to size
(one contact side remains with the offcut; can be re-used)

(red)
Connecting LED strip lights
(two contact sides required)

C = cut length
P = contact surface length

| 2700 K | 5000 K | 120° | |
|---------|---------|------|---------|
| 2780 lx | 2800 lx | | 250 mm |
| 1180 lx | 1200 lx | | 500 mm |
| 650 lx | 660 lx | | 750 mm |
| 405 lx | 415 lx | | 1000 mm |

Illuminance value lx applies to 1 m strip length

Optimised light mixture

- > Cool white and warm white LEDs in the smallest of spaces
- > Optimal light mixture without flickering



- > Dimmable: Yes
- > Area of application: Working areas
Ceiling light direct/indirect
- > Material: Plastic
- > Colour: White
- > Strip width: 8 mm
- > Section length: 50 mm
- > Number of LEDs/m: 2 x 120
- > Life time: L80/B10 >50000 h
- > Colour rendering index Ra: >90
- > Colour rendering index R9: >80
- > Energy efficiency class: F
- > Degree of protection: IP20
- > Installation: Self-adhesive

Note

Maximum strip length (visual) describes a strip section with a visually imperceptible drop in luminous flux of max. 30%. Please note: A strip section with a new power supply that follows immediately is noticeably brighter. Max. wattage-dependent strip length on the driver, see technical data for LED strip lights.

Supplied with

1 roll

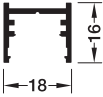
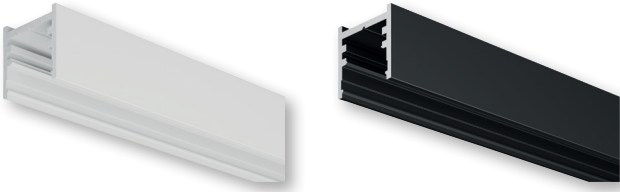


| Colour temperature K | Light colour | Wattage/m W | Luminous flux/m lm | Luminous efficacy lm/W | Max. strip length (visual) m | Packing Piece | 5 m | 50 m |
|----------------------|--------------|-------------|--------------------|------------------------|------------------------------|---------------|------------|------------|
| 2700–5000 | Warm white | 14.4 | 1230–1370 | 85–95 | 5 | 1 or 30 | 833.76.360 | – |
| | Cool white | 14.4 | 1230–1370 | 85–95 | 5 | 1 or 10 | – | 833.76.361 |

Order reference

Please order lead separately. Aluminium profile is recommended from 9.6 W/m. Colour control via Häfele Connect Mesh 6-way distributor with multi-white adapter and remote control or smartphone. Please order separately. Installation of the free Häfele Connect Mesh app is required.

Profile Häfele Lighting OneCable



- > Area of application: Support for the flat cable and for the lights
- > Refinement: Powder coated
- > Material: Aluminium
- > Installation: For drilling, for screwing

Installation reference:
The profile is pre-drilled; additional holes may be required after shortening

Supplied with
1 Profile

| Length mm | Width mm | Height mm | White | Black |
|-----------|----------|-----------|------------|------------|
| 2500 | 18 | 16 | 833.68.304 | 833.68.303 |

Packing: 1 Piece

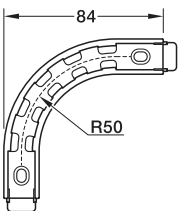
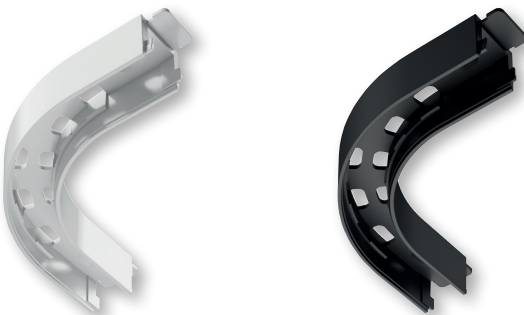
Order reference

End caps to cover open ends are not included in the scope of delivery, please order separately.

| | |
|--------------|--------------|
| ! Flat cable | ► MB 2.217 H |
| ! Feeder | ► MB 2.217 I |

Corner connector for Profile Häfele Lighting OneCable

90° on one plane



Corner connector 90° on one plane

- > Area of application: Corner connector 90° on one plane
- > Suitable for: Profile Häfele Lighting OneCable
- > Material: Zinc alloy
- > Colour/finish: Powder coated
- > Installation: For plug fitting, For screwing
- > Installation reference: 20 cm of cable is required for each corner profile

Supplied with
1 Corner connector

| Corner connector 90° on one plane | White | Black |
|-----------------------------------|------------|------------|
| Corner connector | 833.68.306 | 833.68.305 |

Packing: 1 Piece

DGH-M 2021, HDE-en, 11/20; Dimensional data not binding. We reserve the right to alter specifications without notice.

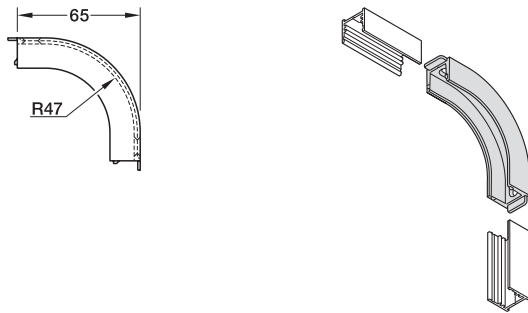
Corner connector for Profile Häfele Lighting OneCable

90° between two planes

2



24 V



Corner connector 90° between 2 planes

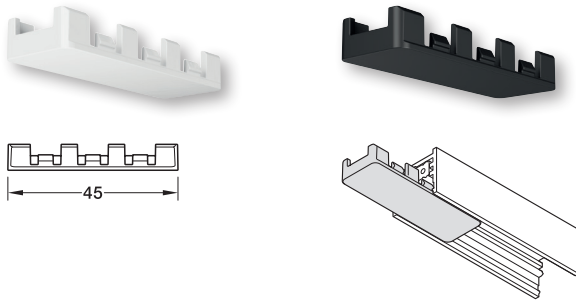
- > Area of application: Corner connector 90° between 2 planes
- > Suitable for: Profile Häfele Lighting OneCable
- > Material: Zinc alloy
- > Colour/finish: Powder coated
- > Installation: For plug fitting,
For screwing
- > Installation reference: 20 cm of cable is required for each corner connector

Supplied with
1 Corner connector

| | White | Black |
|--|------------|------------|
| Corner connector 90° between 2 planes | | |
| Corner connector | 833.68.308 | 833.68.307 |
| Packing: 1 Piece | | |

Alignment Connector Häfele Lighting OneCable

To align, stabilise and secure



Position in the profile

- > Area of application: As an installation aid for aligning and connecting two straight profiles or as a permanent stabilisation of the connection (after pressing in the ribbon cable) or as a mechanical securing device for vertically mounted luminaires
- > Installation: For press fitting

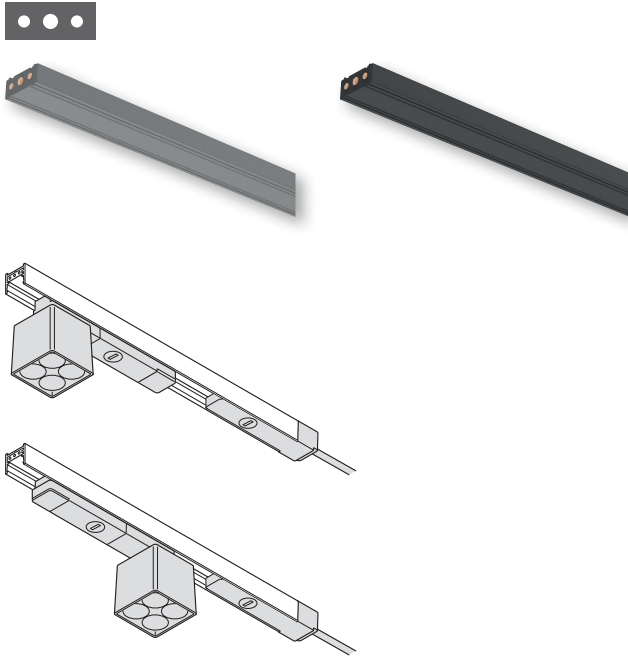
Supplied with
2 Connectors

| Material | Colour/finish | Cat. No. |
|----------|---------------|------------|
| Plastic | White | 833.68.357 |
| | Black | 833.68.356 |

Packing: 2 Pieces

DGH-M 2021, HDE-en, 11/20; Dimensional data not binding. We reserve the right to alter specifications without notice.

Ribbon Cable Häfele Lighting OneCable



Positioning the luminaire connections towards the feeder (top) and away from the feeder (bottom)

- > Material: Rubber
- > Width: 12 mm
- > Height: 6 mm
- > Installation: For push fitting

Note

Reverse polarity protection

The connections for the lights and the LED strip light adapter are reverse polarity protected thanks to the symmetrical design of the flat cable (2 outer cables around the centre cable). This makes it possible to position lights towards or away from the feeder.

Power capacity

- > With feeder up to 90 W:
from 20 W to 90 W depending on the power supply unit.
- > With 2 x 120 W feeders:
The total power of the system is 240 W. Each outer cable of the flat cable may be subjected to a maximum load of 120 W. The distribution to the lines in the flat ribbon cable is achieved by positioning lights with a rated output of max. 120 W in one direction (towards the feeder) and max. 120 W in the other direction (away from the feeder).

System length

Maximum lead length of 20 metres from the power supply unit output to the final light or to the end of an LED strip light.

Supplied with

1 Flat lead

| Length m | Traffic grey, similar to RAL 7042 | Black |
|------------------------------|--------------------------------------|------------|
| Fixed length | | |
| 5 | 833.68.341 | 833.68.301 |
| 10 | 833.68.342 | 833.68.302 |
| 100 | 833.68.344 | 833.68.343 |
| Free choice of length | | |
| - | 833.68.340 | 833.68.300 |

Packing: 1 Piece

DGH-M 2021, HDE-en, 11/20; Dimensional data not binding. We reserve the right to alter specifications without notice.

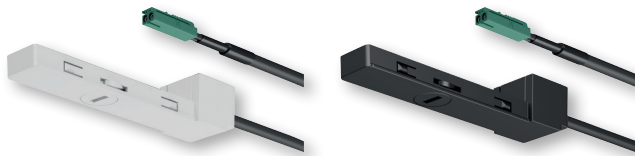
- ! Profile for flat cable ▶ MB 2.217 F
- ! Feeder ▶ MB 2.217 I

Feeder Häfele Lighting OneCable

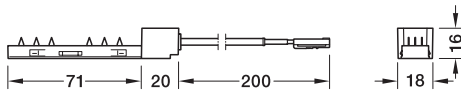
5 24 V



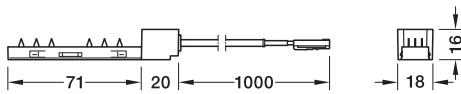
2



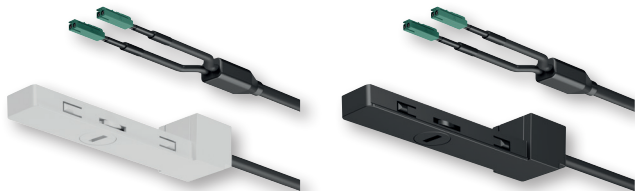
Feeder up to 90 W



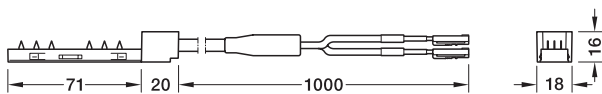
Feeder up to 90 W, 200 mm lead



Feeder up to 90 W, 1000 mm lead



Feeder up to 240 W



Feeder up to 240 W, 1000 mm lead

- > Area of application: Feeder for the flat cable of a profile
- > Material: Plastic
- > Installation: Separable clamp fixing
- > Installation reference: Press the contact blade in straight and without tilting.
Risk of injury: sharp contact blades. Do not touch the reflectors!
For vertical wall mounting, an alignment connector must be attached directly to the light towards the floor as a mechanical safety device.

Note

Power loading capacity up to 90 W in total or 2 x 120 W per external cable, depending on the variant. The positioning of the luminaires can be used to ensure compliance with the maximum power load capacity (120 W positioned away from the feeder, 120 W positioned towards the feeder).

IP20

| Power rating W | Cable length mm | White | Black |
|---------------------------|-----------------|------------|------------|
| With end cap 90 | 200 | 833.68.351 | 833.68.350 |
| | 1000 | 833.68.353 | 833.68.352 |
| 240 | 1000 | 833.68.355 | 833.68.354 |

Packing: 1 Piece

Order reference

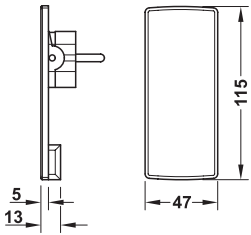
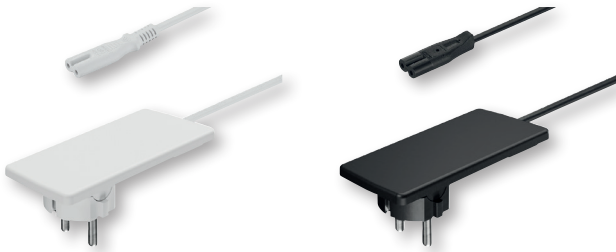
Please order country-specific driver and country-specific lead separately

| | |
|------------------------------------|--------------|
| ! Design housing Häfele Lighting | ► MB 2.217 J |
| ! Driver Häfele Loox5, up to 90 W | ► MB 2.312 |
| ! Driver Häfele Loox5, up to 240 W | ► MB 2.314 |

DGH-M 2021, HDE-en, 11/20; Dimensional data not binding. We reserve the right to alter specifications without notice.

Mains lead Häfele Lighting OneCable

230 V  C7



> Area of application: For Loox5 drivers up to 90 W

Note

The plug requires a Schuko socket. However, the cable used is 2-pole with a C7 socket and is only suitable for power supply units up to 90 W.

Supplied with

1 Mains lead

| Cable length mm | White | Black |
|-----------------|------------|------------|
| 300 | 833.68.314 | 833.68.313 |
| 500 | 833.68.316 | 833.68.315 |

Design housing Häfele Lighting OneCable



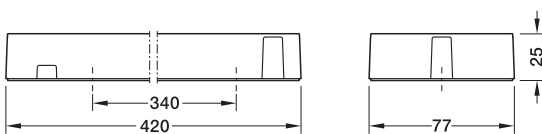
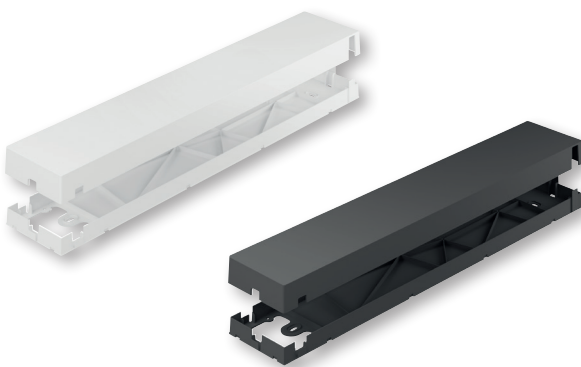
> Area of application: Cover for visibly installed drivers
> Suitable for: Loox5 drivers up to 90 W
> Installation: For screwing

Supplied with

1 Cover (lower shell, upper shell)

| Colour/finish | Cat. No. |
|---------------|------------|
| White | 833.68.310 |
| Black | 833.68.309 |

Packing: 1 Piece



DGH-M 2021, HDE-en, 11/20; Dimensional data not binding. We reserve the right to alter specifications without notice.

Driver with mains lead Häfele Loox5, 24 V DC



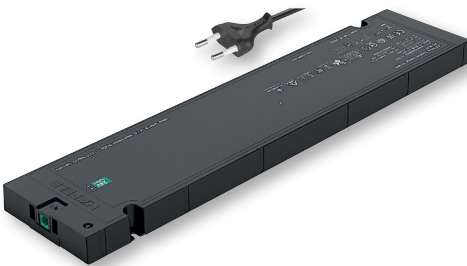
230 V C (EU) **5** 24 V



Driver, 20 W



Driver, 40 W



Driver, 90 W

- > Extremely flat, 16 mm
- > 24 V drivers with Loox5 generation plug system



- > Version: With overload protection
- > Material: Plastic
- > Colour/finish: Black
- > Mains frequency: 50–60 Hz
- > Input ports: 1 x plug, small appliances
- > Output voltage: 24 V DC
- > Connections: 1 x socket, Loox5 2-pin 24 V box to box
- > Life time: >50,000 h
- > Installation: For screwing
- > Installation reference: Ensure that there is a sufficient air supply and circulation at the mounting location. Provide inspection opening.

Note

The service life is doubled at an ambient temperature of <30° C. Max. lead length from Loox5 driver to consumer: 10 m. Due to long cable lengths, voltage losses occur in the cable in conjunction with large loads (strip light lengths). These lead to visible loss of brightness in the lights. The illumination intensity specified for the lights has been determined with the rated output voltage of the driver (12 V or 24 V).

Supplied with

- 1 driver incl. fixing material
- 1 mains lead 2 m with flat Euro plug



| Output power W | Standby power consumption W | Ambient temperature °C | Dim. (L x W x H) mm | Cat. No. |
|--|-----------------------------|------------------------|---------------------|------------|
| 220–240 V AC: Typical mains voltage e.g. for EU, UK, AU, KR – not US! | | | | |
| 20 | 0.10 | -25–45 | 140 x 50 x 16 | 833.77.972 |
| 100–240 V AC | | | | |
| 40 | 0.15 | -25–45 | 191 x 60 x 16 | 833.77.973 |
| 90 | 0.21 | -25–45 | 316 x 70 x 16 | 833.77.974 |

Packing: 1 Set

Order reference

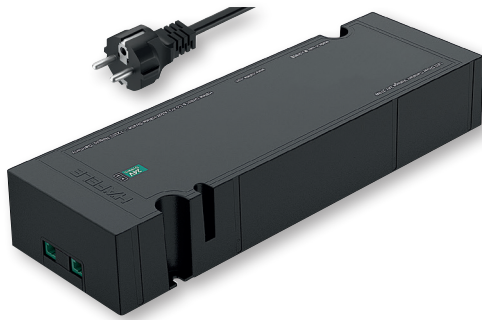
Alternative mains leads available with open cable ends or switches.
Country-specific leads with C7 small device socket at www.hafele.com

| | |
|---|------------|
| Häfele Connect Mesh 6-way distributor | ▶ MB 2.286 |
| 6-way distributor with switching function, Häfele Loox5 12/24 V | ▶ MB 2.298 |
| Alternative mains leads | ▶ MB 2.328 |
| Extension leads | ▶ MB 2.328 |

DGH-M 2021, HDE-en, 10/20; Dimensional data not binding. We reserve the right to alter specifications without notice.

Driver with mains lead Häfele Loox5, 24 V DC

230 V F (DE) **5** 24 V



Driver, 240 W (2 x 120 W)

24 V driver with Loox5 generation plug system

- > Version: With overload protection
- > Material: Plastic
- > Colour/finish: Black
- > Mains voltage: 200–240 V
- > Mains frequency: 50–60 Hz
- > Input ports: 1 x plug, non-heating appliances
- > Output voltage: 24 V DC
- > Connections: 2 x sockets, Loox5 2-pin 24 V
- > Life time: >50,000 h
- > Installation: For screwing
- > Installation reference: Provide for sufficient air supply and circulation at the mounting location. Provide inspection opening.

Note

Lead length from Loox5 driver to device max. 10 m. Long cable lengths in combination with large loads (strip light lengths) can result in voltage drop in the cable. These lead to visible loss of brightness in the lights. The illuminance listed with the lights has been determined with the nominal output voltage of the driver (12 V or 24 V).

Supplied with

- 1 driver with fixing material
- 1 mains lead



| Output power W | Standby power consumption W | Ambient temperature °C | Dim. (L x W x H) mm | Cat. No. |
|----------------|-----------------------------|------------------------|---------------------|------------|
| 240, (2 x 120) | 0.42 | -25–45 | 234 x 75 x 38 | 833.77.975 |

Packing: 1 Set

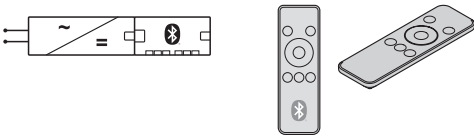
Order reference

Alternative mains lead with open cable ends available.
Country-specific leads with C13 non-heating apparatus socket at www.hafele.com

| | |
|---|------------|
| Häfele Connect Mesh 6-way distributor | ▶ MB 2.287 |
| 6-way distributor with switching function, Häfele Loox5 24 V | ▶ MB 2.298 |
| Alternative mains lead with open cable ends for direct connection | ▶ MB 2.328 |
| Spare mains lead with cold appliance socket C13 | ▶ MB 2.328 |

DGH-M 2021, HDE-en, 10/20; Dimensional data not binding. We reserve the right to alter specifications without notice.

Remote control Häfele Connect Mesh



Functionality

Programming of all functions via app.

> One remote control for all applications: Monochrome lights, multi-white lights, RGB lights and electrically operated fittings



- > Area of application: For controlling Häfele Connect mesh components in a network
- > Version: Multi-function control panel
- > Material: Plastic
- > Dim. (L x W x H): 130 x 42 x 11 mm
- > Type of battery: Lithium
- > IEC standard battery size: CR2032
- > Embedded battery: replaceable
- > Battery service life: 3,600 duty cycles
- > Signal transmission: Bluetooth®
- > Installation: Magnetic adhesion

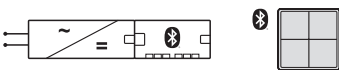


| Colour/finish | Design | Cat. No. |
|---|-----------------------|------------|
| Remote control without batteries | | |
| Black | Frame: plastic, white | 850.00.040 |
| Black, matt | Frame: plastic, black | 850.00.140 |
| Remote control including batteries, 2 x CR2032 | | |
| Black | Frame: plastic, white | 850.00.062 |
| Black, matt | Frame: plastic, black | 850.00.170 |

Order reference

The remote control requires 2 CR2032 lithium button cell batteries (002.99.032), please order separately for Cat. No. 850.00.040 and 850.00.140. Please order Häfele Connect Mesh 6-way distributor separately.

4-way wall mounted push button Häfele Connect Mesh



Functionality

Programming of all functions via app.

Order reference

The wall mounted push button requires 1 CR2430 lithium button cell battery (002.99.034), please order separately for Cat. No. 850.00.041 and 850.00.141. Please order Häfele Connect Mesh 6-way distributor separately.

- > Area of application: For controlling Häfele Connect mesh components in a network
- > Version: 4-button panel
- > Material: Plastic
- > Dim. (L x W x H): 81 x 81 x 12 mm
- > Type of battery: Lithium
- > IEC standard battery size: CR2430
- > Embedded battery: replaceable
- > Battery service life: 1,800 duty cycles
- > Signal transmission: Bluetooth®
- > Installation: For screwing



| Colour/finish | Design | Cat. No. |
|---|-----------------------|------------|
| 4-way wall mounted push button without battery | | |
| Black | Frame: plastic, white | 850.00.041 |
| Black, matt | Frame: plastic, black | 850.00.141 |
| 4-way wall mounted push button with battery 1 x CR2430 | | |
| Black | Frame: plastic, white | 850.00.063 |
| Black, matt | Frame: plastic, black | 850.00.171 |

! Häfele Connect Mesh 6-way distributor

► MB 2.286

DGH-M 2021, HDE-en, 10/20; Dimensional data not binding. We reserve the right to alter specifications without notice.